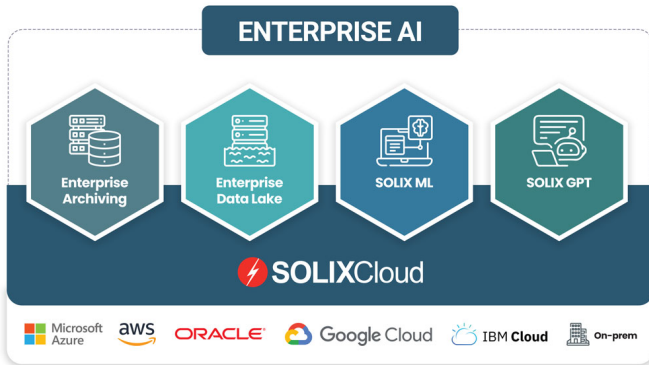
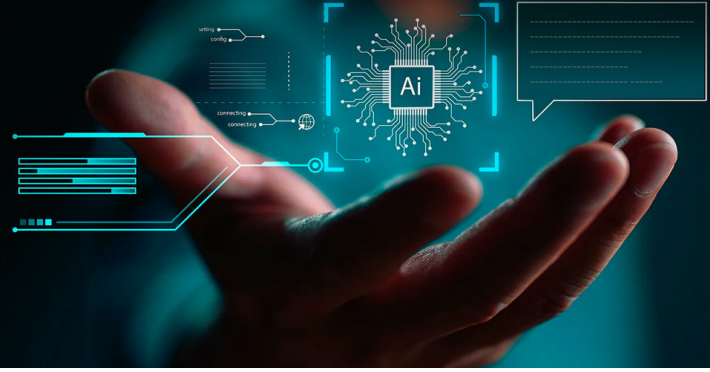




PRODUCT DATASHEET

SOLIXCLOUD ENTERPRISE AI



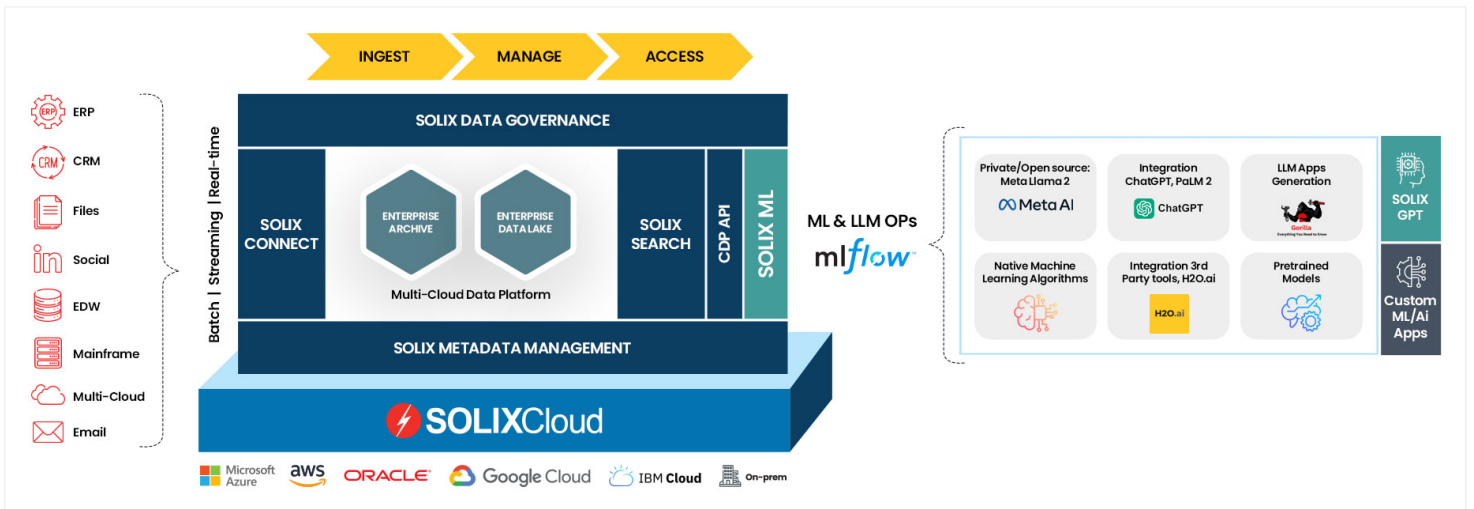
SOLIXCloud Enterprise AI is a generative AI and machine learning platform for the enterprise that includes Solix GPT and Solix ML.

With SOLIXCloud Enterprise AI, organizations are able to leverage enterprise data against state-of-the-art large language models (LLM) and machine learning platforms revolutionizing employee productivity and operational efficiency across industries with safe and secure cloud data management.

Solix Common Data Platform Key Capabilities for Enterprise AI

SOLIXCloud Enterprise AI is powered by the Solix Common Data Platform (CDP), a multi-cloud data fabric and information architecture (IA) that helps organizations manage and process their structured, semi-structured, and unstructured enterprise data. Solix CDP connects and pipelines enterprise data from any source to any target and provides robust data governance, consumer data privacy, data catalog, and security for large-scale enterprise data repositories. Solix CDP also powers the Solix cloud data management application framework, which includes SOLIXCloud Enterprise Archiving, SOLIXCloud Enterprise Data Lake, SOLIXCloud Consumer Data Privacy, and SOLIXCloud Enterprise Content Services (ECS).

At Solix, we understand that the foundation of exceptional AI insights lies in the quality of the training data. With Solix Enterprise AI, users leverage their enterprise data resource based on policies to ensure that the security and privacy of their data will be protected.



Solix CDP

Solix CDP collects, governs, catalogs and safely stores all enterprise data, including structured, semi-structured and unstructured data, and provides a unified, multi-cloud repository.

Datasheet:

SOLIXCloud Enterprise AI

info@solix.com | +1.888-GO-SOLIX

Pre-built Knowledge Bases

With prebuilt knowledge bases for multiple applications, application teams can roll out various application archiving projects faster, reducing project complexities, time, and costs.

Predefined Workflow for Data Pipelines

SOLIXCloud Enterprise Data Lake helps create custom or predefined ETL workflows that are integrated end-to-end with data preparation and quality services.

Data Preparation for Improved Data Quality

SOLIXCloud Enterprise Data Lake cleanses and transforms raw data in preparation for future processing, and makes data fit-for-use by AI and machine learning purposes. Data quality is achieved through data profiling, labeling, data cleansing, data enrichment, data transformation, and data modeling.

Solix Connect to Collect Data from anywhere

SOLIX CDP provides easy-to-use cloud data management applications with a comprehensive capability to connect, ingest, and manage any type of data from any source, such as SaaS-based services, mainframes, and virtually any database or file server.

Metadata Management and Data Catalog

Solix metadata management and data catalog is an end-to-end framework to explore all enterprise metadata and data lineage from a centralized repository and business glossary. Build metadata catalogs and establish policies and processes with specific business contexts to ensure enterprise data can be integrated, accessed, shared, and analyzed for proper data management and data governance.

Data Governance & Compliance

Solix CDP delivers comprehensive data governance and consumer data privacy capabilities like data sovereignty, data classification, sensitive data discovery, legal holds, retention management, e-discovery, and audit reports. Solix CDP governance is based on policy-based Information Lifecycle Management (ILM) for enterprise data. ILM ensures comprehensive policies for archiving business objects to meet your data retention and compliance requirements are in place, and it helps manage industry compliance frameworks like PCI-DSS, HIPAA, FISMA, GDPR, CCPA, and many more.

Robust Data Access Methods

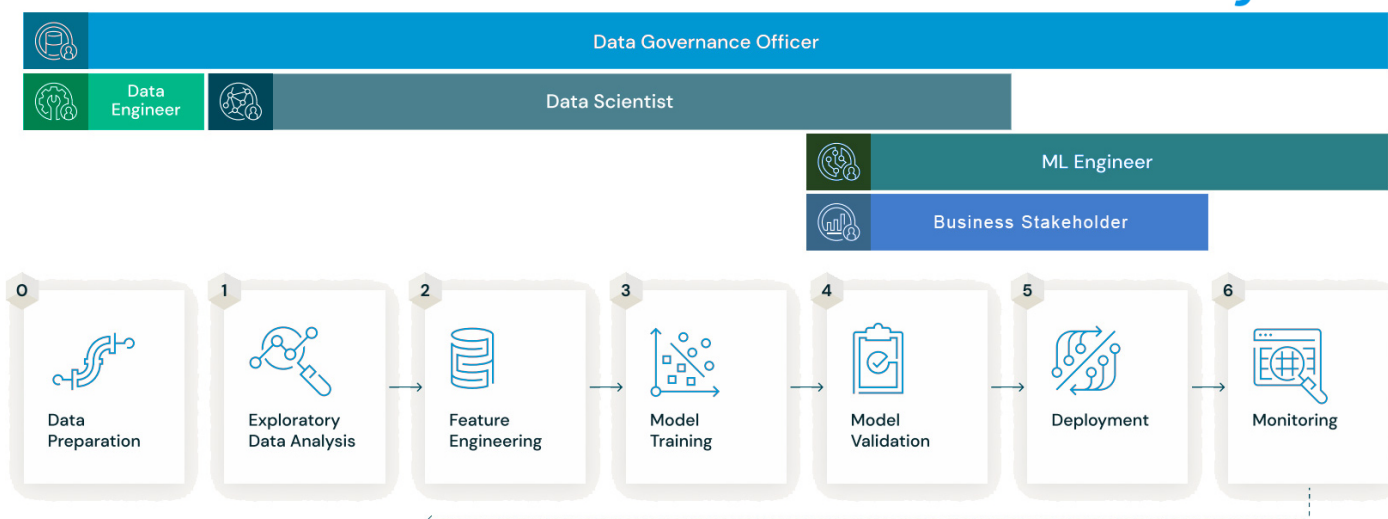
Solix CDP provides easy and quick access to archived data via text search, reports, forms, query builders, APIs, predefined reporting bundles for applications, and business object transaction snapshots called Enterprise Business Records.

Cloud Native Software Architecture

Solix CDP is designed around cloud native, W3C open source standards to ensure easy interoperability and scalability. Serverless deployment and access/support for leading open-source data resources such as Apache Iceberg, Apache Spark, Apache Hudi, and Citus are available. Large data set processing is the goal and enterprise AI requires horizontal scalability to meet ultra-high performance objectives and robust support for ANSI SQL and ACID transactions

Introducing Solix ML for AI-powered Apps

ML WORKFLOW AND PERSONAS



Datasheet:

Solix ML is a machine learning platform based on MLFlow. Solix ML allows for efficient deployment, monitoring, and maintenance of machine learning models by managing workflows and artifacts across the machine learning lifecycle from initial model development through deployment and decommissioning. SOLIX ML is powered by the Solix CDP and MLFlow.

Unique Capabilities for Unstructured Data

One critical differentiator of Solix ML is the ability to process textual data along with tabular data combined into a single complex business object called an enterprise business record.

Scalability

Solix ML is designed for scalability which is essential for handling massive datasets and achieving high-performance objectives. It allows organizations to scale their AI applications as their data grows.

Full Machine Learning Lifecycle Support

Solix ML provides workflow and data collection support throughout the machine learning development process, including:

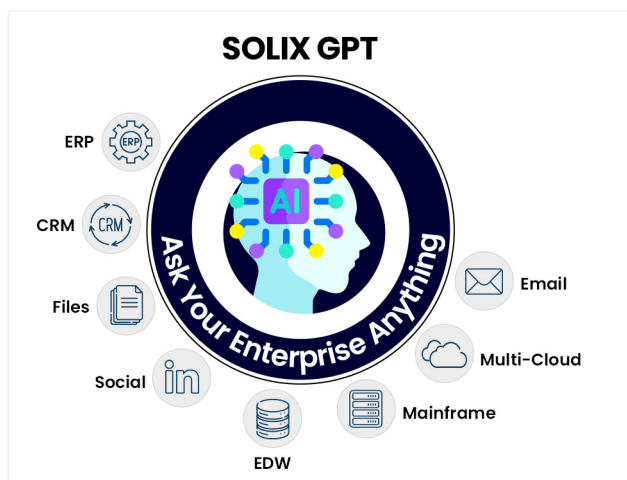
- Data Preparation
- Feature Engineering
- Model Validation
- Monitoring
- Data Exploration and Analysis
- Model Training
- Pipeline/Deployment

Integration with Solix CDP

The seamless integration with Solix CDP ensures that Solix ML can access and safely utilize enterprise data to its full potential. This integration allows for robust data preparation and data quality services, enhancing the quality of training data.

Introducing Solix GPT - "Ask Your Enterprise Anything."

Solix GPT is a generative AI application for the enterprise that enables employees to "ask the enterprise anything." SOLIXCloud Enterprise Archiving and SOLIXCloud Enterprise Data Lake users leverage Solix GPT for personal productivity and to make more informed business decisions.



Solix GPT uses Solix ML to train on 'your' enterprise data and create specific context to your business. All data is sourced from compliant archives and data lakes running on Solix CDP.


Solix GPT offers superior performance over most publicly accessible large language models as its foundation is the advanced Meta AI Llama 2 which excels in natural language conversational interactions and generating code including discussions related to code. Llama 2 is a collection of pre-trained and fine-tuned large language models (LLMs) ranging in scale from 7 billion to 70 billion parameters. These fine-tuned LLMs, called Llama 2-Chat, are optimized for dialogue use cases.

Solix GPT fine-tunes to 'your' enterprise as it is trained on 'your' enterprise data, resulting in enhanced abilities in reasoning, coding, skill development, and knowledge assessments.

Make Every Employee a Knowledge Worker

Not all workers receive SQL or similar structured language training for retrieving data from an enterprise archive or data lake. Natural language interfaces like Solix GPT present a transformative opportunity for boosting productivity among all employees.

As all employees gain the ability to retrieve any enterprise information, the importance of data governance, access control, and data security significantly increases. Solix CDP provides features such as role-based access control (RBAC), end-to-end encryption, dynamic and static data masking, data redaction, and consumer data privacy regulations compliance to ensure all enterprise data is properly governed and securely managed.


REQUEST DEMO


VISIT WEBSITE

CONTACT US
info@solix.com
+1.888-GO-SOLIX